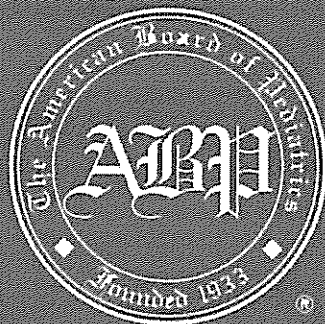


# Workforce Data

*2008 - 2009*



The American Board of Pediatrics

**Pediatric Subspecialty Diplomates Certified Through December 31, 2008**

Candidates	1986	1987	1988	1989	1990	1991	1992	1993	1994	1995	1996	1997	1998	1999	2000	2001	2002	2003	2004	2005	2006	2007	2008	Totals		
Adolescent Medicine																										
Cardiology**		776				133	59	100	147	121	111	209	132	48	47	139	131	155	125	125	140	140	153	166	215	2206
Critical Care Medicine																										
Developmental-Behavioral Pediatrics																										
Emergency Medicine																										
Endocrinology**																										
Gastroenterology																										
Hematology-Oncology**																										
Hospice and Palliative Medicine																										
Infectious Diseases																										
Medical Toxicology																										
Neonatal-Perinatal Medicine**																										
Nephrology**																										
Neurodevelopmental Disabilities																										
Pulmonology																										
Rheumatology																										
Sleep Medicine																										
Sports Medicine																										
Transplant Hepatology																										

\*\* Cumulative from first examination through 1986

18,949

TOTAL SUBSPECIALISTS

93,694

TOTAL GENERAL PEDIATRICIANS

**General Pediatrics Examination**  
**Total Number of First-time Applicants since 1990**  
**Career Choices**

Year	Candidates	General Pediatrics %	Subspecialty %	Non-pediatric Specialty %
1990	2185	57	33	10
1991	2223	62	31	7
1992	2221	60	30	10
1993	2284	61	30	9
1994	2583	64	28	8
1995	2685	67	27	5
1996	2963	71	22	5
1997	2811	72	21	5
1998	2922	73	20	5
1999	3032	72	21	5
2000	2874	68	23	5
2001	3028	68	24	5
2002	3007	66	24	6
2003	2879	65	27	5
2004	3106	69	25	4
2005	2994	66	29	4
2006	2964	64	28	6
2007	3102	62	32	6
2008	3045	62	32	6

Note: Beginning in 1995, an additional response of "Other" was included on the survey, but not reported. As a result, the percents may not add to 100.

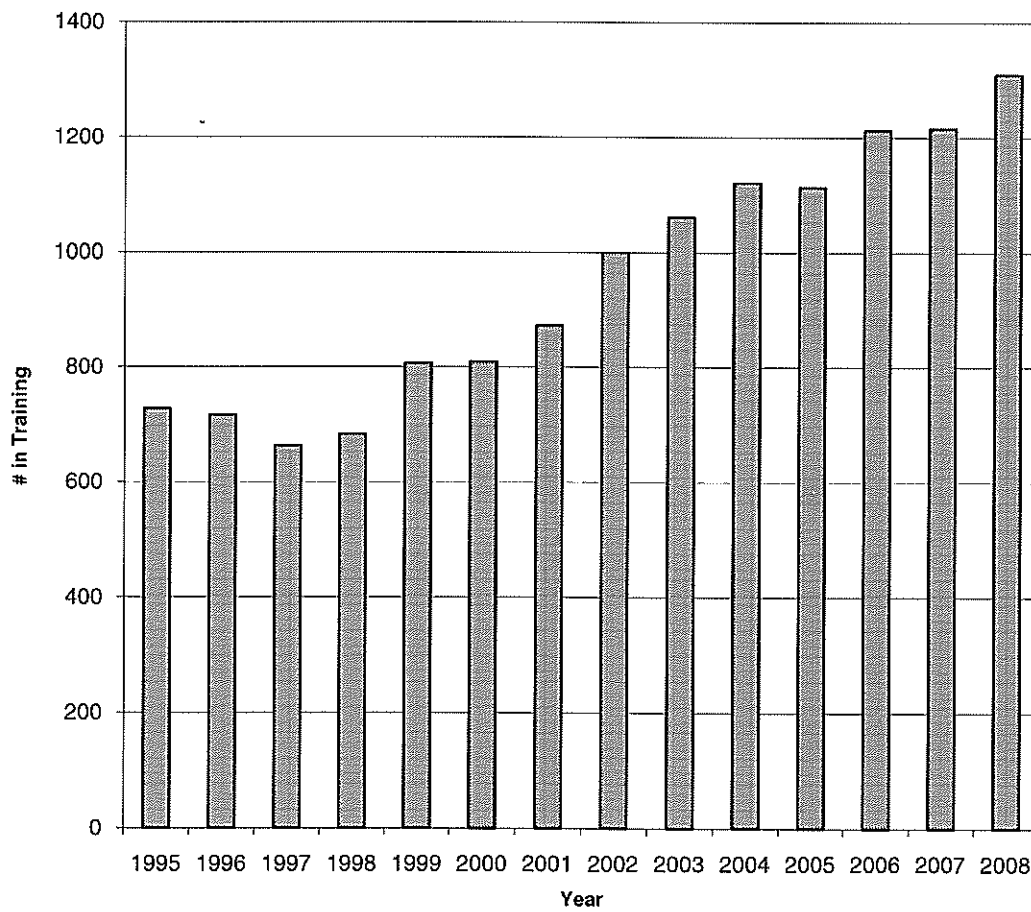
**2008 Pediatric Subspecialty Tracking  
Number of Beginning Fellows by Level**

Pediatric Subspecialty Type	Training Level					Total
	1	2	3	4	5	
Adolescent Medicine	28	21	20	0	0	69
Allergy and Immunology/Infectious Diseases	0	0	2	0	0	2
Cardiology	135	121	109	20	1	386
Child Abuse	11	7	3	0	0	21
Critical Care Medicine/Cardiology	2	0	1	1	1	5
Critical Care Medicine/Emergency Medicine	0	0	0	1	0	1
Critical Care Medicine/Pulmonology	0	0	0	1	0	1
Critical Care Medicine	142	135	118	1	0	396
Developmental-Behavioral/Neonatal-Perinatal	0	0	0	0	0	0
Developmental-Behavioral Pediatrics	35	19	25	0	0	79
Emergency Medicine	134	128	103	3	0	368
Endocrinology	93	81	76	1	0	251
Gastroenterology	90	82	77	2	0	252*
Hematology-Oncology	150	147	114	7	0	419*
Infectious Diseases	72	60	53	2	0	187
Infectious Diseases/Emergency Medicine	0	2	0	0	1	3
Medicine-Pediatrics/Cardiology	0	0	0	1	0	1
Medicine-Pediatrics/Critical Care	0	0	0	1	0	1
Medicine-Pediatrics/Endocrinology	0	0	0	1	0	1
Medicine-Pediatrics/Gastroenterology	0	0	0	0	1	1
Medicine-Pediatrics/Hematology-Oncology	1	0	0	0	0	1
Medicine-Pediatrics/Infectious Diseases	0	0	1	4	0	5
Medicine-Pediatrics/Nephrology	1	0	2	0	0	3
Medicine-Pediatrics/Pulmonology	0	0	1	0	0	1
Medicine-Pediatrics/Rheumatology	0	0	0	1	0	1
Neonatal-Perinatal Medicine	271	220	200	3	1	695
Nephrology	53	53	22	1	0	129
Pulmonology	53	54	39	1	0	147
Pulmonology/Adult Critical Care Medicine/Adult Pulmonology	0	0	0	1	0	1
Rheumatology	38	24	26	3	0	91
<b>Total</b>	<b>1309</b>	<b>1154</b>	<b>992</b>	<b>56</b>	<b>5</b>	<b>3519</b>

\* Note: Gastroenterology and Hematology-Oncology tracking numbers include one fellow at training level 6.

**Pediatric Subspecialty Tracking  
Total Number in First-year Fellowship Training Since 1995**

Year	# in Training
1995	728
1996	717
1997	664
1998	684
1999	807
2000	809
2001	872
2002	1000
2003	1061
2004	1121
2005	1113
2006	1213
2007	1216
2008	1309



Note: Includes all programs in tracking data.

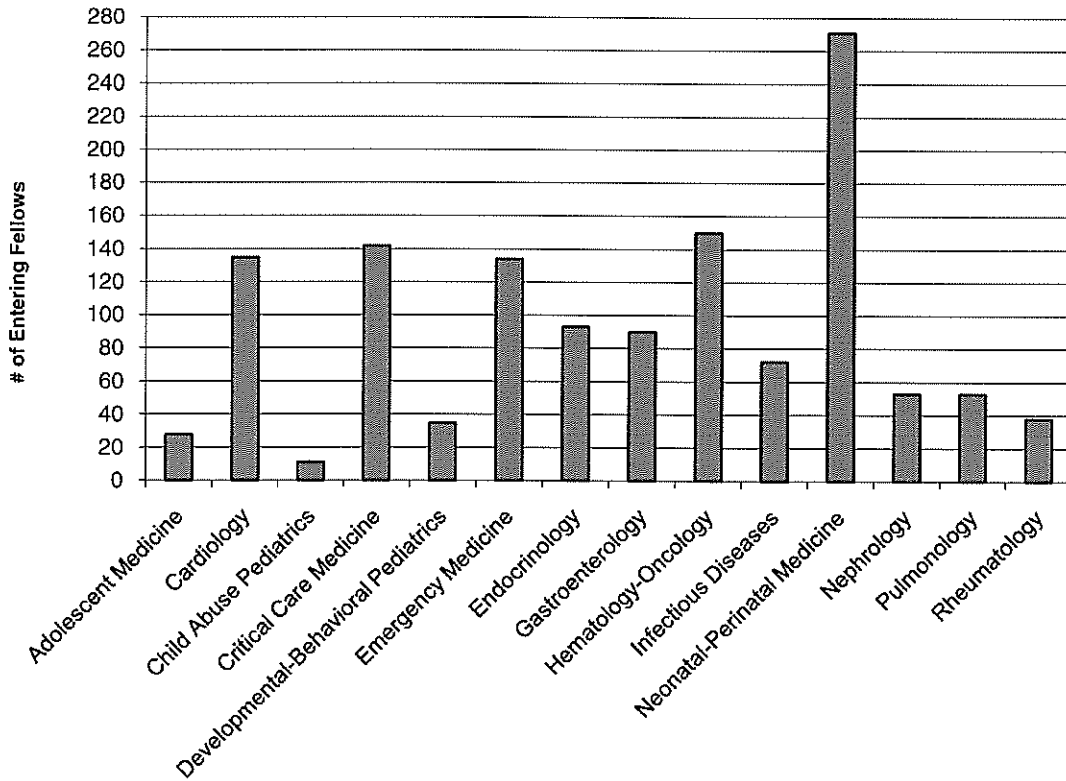
**Pediatric Subspecialty Resident Tracking  
Number in First-year Fellowship Training  
by Subspecialty Since 1995**

Subspecialty	Year Beginning													
	1995	1996	1997	1998	1999	2000	2001	2002	2003	2004	2005	2006	2007	2008
Adolescent Medicine	23	22	23	26	26	26	28	26	28	24	19	21	24	28
Cardiology	80	70	77	70	82	81	75	105	112	116	109	128	120	135
Child Abuse Pediatrics	—	—	—	—	—	—	—	—	—	—	—	—	11	11
Critical Care Medicine	88	103	72	90	96	99	99	112	116	135	127	164	147	142
Developmental-Behavioral Pediatrics	—	—	—	—	—	27	20	27	21	30	30	29	19	35
Emergency Medicine	82	66	69	65	82	82	90	99	107	114	129	126	133	134
Endocrinology	45	38	33	41	45	49	53	73	79	71	76	89	77	93
Gastroenterology	49	31	39	40	52	44	50	65	66	73	77	83	81	90
Hematology-Oncology	89	88	81	80	99	100	96	120	126	135	131	135	155	150
Infectious Diseases	54	54	40	57	49	63	54	59	66	65	66	72	70	72
Neonatal-Perinatal Medicine	151	171	151	143	190	171	192	208	217	224	215	243	240	271
Nephrology	28	30	29	25	25	28	26	34	41	46	39	33	54	53
Pulmonology	31	33	40	36	36	43	42	35	53	50	44	50	57	53
Rheumatology	8	11	10	11	14	14	14	19	19	24	28	32	26	38
<b>Total</b>	<b>728</b>	<b>717</b>	<b>664</b>	<b>684</b>	<b>796</b>	<b>827</b>	<b>839</b>	<b>982</b>	<b>1051</b>	<b>1107</b>	<b>1090</b>	<b>1205</b>	<b>1214</b>	<b>1305</b>

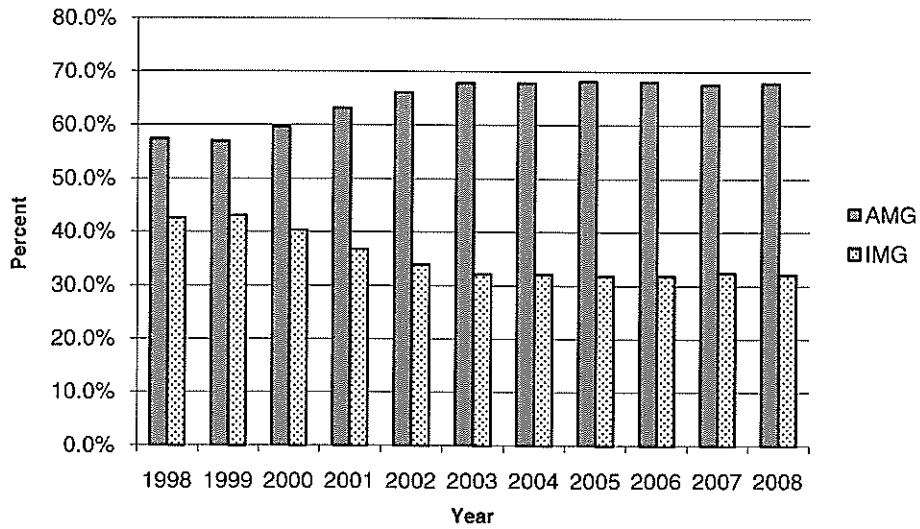


**Pediatric Subspecialties Tracking**  
**2008 Total Number of First-year Fellows by Subspecialty - AMG/IMG and Gender**

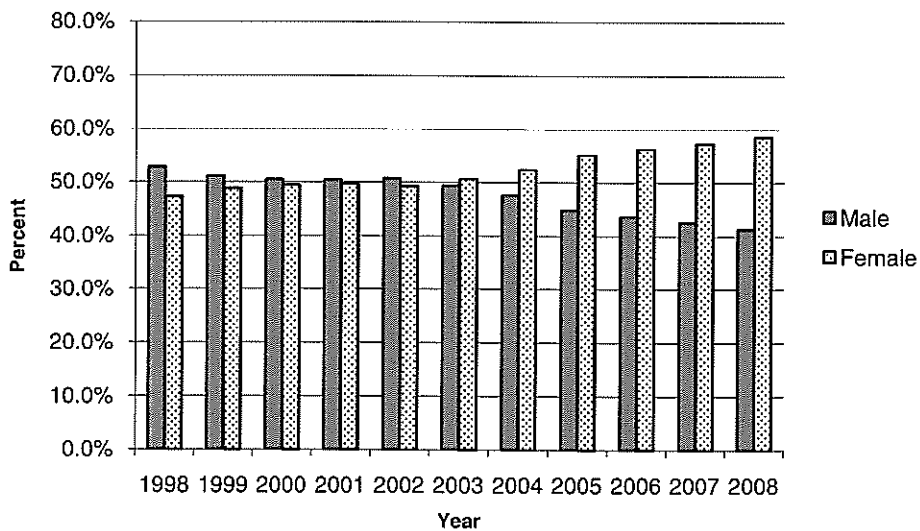
Area	Total	%	Percent			
			AMG	IMG	Male	Female
Adolescent Medicine	28	2.1%	67.9%	32.1%	7.1%	92.9%
Cardiology	135	10.3%	76.3%	23.7%	63.7%	36.3%
Child Abuse Pediatrics	11	0.8%	90.9%	9.1%	9.1%	90.9%
Critical Care Medicine	142	10.9%	69.7%	30.3%	52.8%	47.2%
Developmental-Behavioral Pediatrics	35	2.7%	82.9%	17.1%	20.0%	80.0%
Emergency Medicine	134	10.3%	80.6%	19.4%	40.3%	59.7%
Endocrinology	93	7.1%	65.6%	34.4%	15.1%	84.9%
Gastroenterology	90	6.9%	68.9%	31.1%	43.3%	56.7%
Hematology-Oncology	150	11.5%	65.3%	34.7%	46.0%	54.0%
Infectious Diseases	72	5.5%	73.6%	26.4%	26.4%	73.6%
Neonatal-Perinatal Medicine	271	20.8%	54.6%	45.4%	36.9%	63.1%
Nephrology	53	4.1%	43.4%	56.6%	37.7%	62.3%
Pulmonology	53	4.1%	62.3%	37.7%	47.2%	52.8%
Rheumatology	38	2.9%	71.1%	28.9%	34.2%	65.8%
<b>Total</b>	<b>1305</b>	<b>100.0%</b>	<b>66.9%</b>	<b>33.1%</b>	<b>40.2%</b>	<b>59.8%</b>



**Pediatric Subspecialties Tracking  
Percent of Fellows in Training  
Trends in AMG/IMG**



**Pediatric Subspecialties Tracking  
Percent of Fellows in Training  
Trends in Gender**



Note: Data prior to 1998 are not included because full tracking data was not available. The total values include 14 subspecialties. In addition, only the first three years of training are included.